

Product Highlights

High-Speed Networking

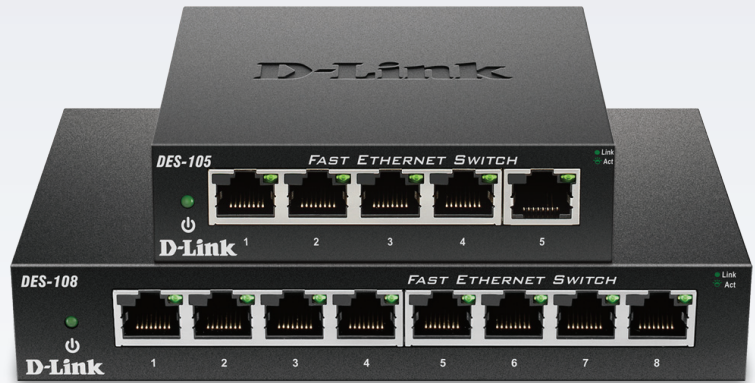
Fast Ethernet ports allow you to connect up to five or eight devices for fast file transfers and smooth media streaming

Intelligent Data Streaming

QoS support enables uninterrupted VoIP calls, smooth online gaming, and quick downloads over the network connection

Eco-Friendly and Economical

D-Link Green Technology saves energy while using an economical yet innovative design that runs cool and quiet



DES-105/108

5/8-Port 10/100 Mbps Unmanaged Switch

Features

Fast Connectivity

- Five (DES-105) or eight (DES-108) Fast Ethernet LAN ports for high-speed wired connections
- Plug-and-play installation for convenience

Green Ethernet Features

- Reduces power to a port when no link to that port is detected
- Adjusts power to a port by detecting the length of the connected Ethernet cable

Eco-friendly Design

- Compliant with Energy Star Level V, CEC, and MEPS regulations
- Compliant with RoHS standards

This 5/8-Port 10/100BASE-TX Fast Ethernet Switch is designed for the departmental and enterprise connection. Powerful and versatile, it eliminates network bottlenecks while giving users the capability to fine-tune performance. The DES-105/108 has a special front access design for Ethernet ports/LEDs for easier control of network status. Also, the metal case design keeps cool, allowing for superior performance. Additionally, the DES-105/108 complies with IEEE 802.3az Energy-Efficient Ethernet (EEE) standards, making it energy efficient without losing connectivity or functionality.

Integrated Network

The DES-105/DES-108 5/8-port 10/100 Mbps Switch uses auto-sensing 10/100 Mbps ports, allowing a small workgroup to flexibly connect to Ethernet and Fast Ethernet devices to create an integrated network. These ports detect the network speed and auto-negotiate between 10BASE-T and 100BASE-TX, as well as between full and half-duplex, allowing you to get the maximum speed possible for each device connected to your network.

Simplified Installation

All of the ports on the DES-105/108 support automatic MDI/MDIX crossover, eliminating the need for crossover cables or uplink ports. Each port can be plugged directly to a server, hub, router, or switch using regular straight-through twisted-pair Ethernet cables. In addition, the DES-105/108 features multiple front, easy-to-access Ethernet ports with LED indicators per port to easily distinguish link status.

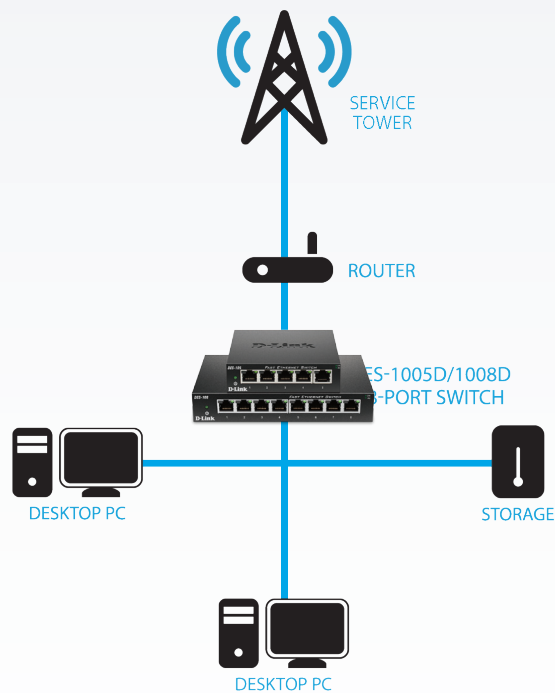
Flow Control for Secure Transmission

When a port reaches its receiving buffer capacity, the 802.3x flow control feature activates to minimize dropped packets. By minimizing the number of dropped packets, the switch provides a more reliable connection for all of your connected devices while surfing the web, playing games, or accessing media.

Environmentally Friendly

The DES-105/DES-108 is a plug-and-play networking switch that uses D-Link's Green Technology to save energy and reduce heat, which in turn extends product life without sacrificing performance or functionality. The switch supports IEEE 802.3az Energy-Efficient Ethernet (EEE) which detects when a connected computer is shut down or when there is no Ethernet traffic, in which the switch will proceed to power down the idle port, saving a substantial amount of power.

Your Network Setup



Technical Specifications

General

Device Interfaces

- DES-105: Five 10/100 Mbps LAN ports

- DES-108: Eight 10/100 Mbps LAN ports

Standards

- IEEE 802.3 10BASE-T
- IEEE 802.3u 100BASE-TX
- IEEE 802.3x Flow Control

- IEEE 802.1p QoS
- IEEE 802.3az Energy-Efficient Ethernet (EEE)

Functionality

Advanced Features

- Green Ethernet
- 1/1.6 Gbps switching fabric
- Auto MDI/MDIX crossover for all ports
- Secure store-and-forward switching scheme
- Full/half-duplex for Ethernet/Fast Ethernet speeds
- Supports 2,048-Byte Jumbo Frames
- Back pressure at half-duplex operation
- Wire-speed reception and transmission
- Store and-forward switching method

- Auto-Negotiation for each port
- RoHS compliant.
- ErP compliant
- EEE compliant
- IEEE 802.3 10BASE-T
- IEEE 802.3u 100BASE-TX
- IEEE 802.3az EEE
- IEEE 802.3x flow control
- IEEE 802.1p QoS (4 queues, strict mode)

Protocol

- CSMA/CD

DES-105/108 5/8-Port 10/100 Mbps Unmanaged Switch

Data Transfer Rates	<ul style="list-style-type: none"> Ethernet: <ul style="list-style-type: none"> 10 Mbps (half duplex) 20 Mbps (full duplex) 	<ul style="list-style-type: none"> Fast Ethernet: <ul style="list-style-type: none"> 100 Mbps (half duplex) 200 Mbps (full duplex)
Transmission Method	<ul style="list-style-type: none"> Store-and-forward 	
MAC Address Table	<ul style="list-style-type: none"> 2 K 	
MAC Address Learning	<ul style="list-style-type: none"> Automatic Update 	
Packet Filtering/Forwarding Rates	<ul style="list-style-type: none"> Ethernet: 14,880 pps per port 	<ul style="list-style-type: none"> Fast Ethernet: 148,800 pps per port
RAM Buffer	<ul style="list-style-type: none"> DES-105: 384KB per device 	<ul style="list-style-type: none"> DES-108: 768KB per device
Physical		
LED Indicators	<ul style="list-style-type: none"> Per port: Link/Activity/Speed 	<ul style="list-style-type: none"> Per device: Power
Media Interface Exchange	<ul style="list-style-type: none"> Auto MDI/MDIX adjustment for all ports 	
Dimensions	<ul style="list-style-type: none"> DES-105: 100 x 98 x 28 mm (3.93 x 3.86 x 1.10 inches) 	<ul style="list-style-type: none"> DES-108D: 162 x 102 x 28mm (3.54 x 2.83 x 1.06 inches)
Weight	<ul style="list-style-type: none"> DES-105: 260 grams (0.57 lbs) 	<ul style="list-style-type: none"> DES-108: 410 grams (0.90 lbs)
Power	<ul style="list-style-type: none"> 5V/0.55A level V 	<ul style="list-style-type: none"> DC jack: Located at rear panel
Power Consumption	<p>DES-105:</p> <ul style="list-style-type: none"> Power On (Standby): <ul style="list-style-type: none"> DC input: 0.15 Watts AC input: 0.25 Watts Maximum: <ul style="list-style-type: none"> DC input: 0.85 Watts AC input: 2.17 Watts 	<p>DES-108:</p> <ul style="list-style-type: none"> Power On (Standby): <ul style="list-style-type: none"> DC input: 0.25 Watts AC input: 0.3 Watts Maximum: <ul style="list-style-type: none"> DC input: 1.3 Watts AC input: 2.4 Watts
Temperature	<ul style="list-style-type: none"> Operating: 0 to 40 °C (32 to 104 °F) 	<ul style="list-style-type: none"> Storage: -10 to 70 °C (14 to 158 °F)
Humidity	<ul style="list-style-type: none"> Operating: 10% to 90% non-condensing 	<ul style="list-style-type: none"> Storage: 5% to 90% non-condensing
MTBF	<ul style="list-style-type: none"> DES-105: 1,564,656 hours 	<ul style="list-style-type: none"> DES-108: 831,209 hours
Heat Dissipation	<ul style="list-style-type: none"> Power On (Standby) <ul style="list-style-type: none"> DES-1005D: AC Input: 0.853 BTU/h DES-1008D: AC Input: 1.0236 BTU/h 	<ul style="list-style-type: none"> Maximum: <ul style="list-style-type: none"> DES-1005D: DC Input: 2.9002 BTU/h DES-1008D: AC Input: 4.4356 BTU/h
Certifications	<ul style="list-style-type: none"> FCC Class B CE Class B C-Tick CB 	<ul style="list-style-type: none"> ICES-003 Class B VCCI Class B cUL
Order Information		
<i>Part Number</i>	<i>Description</i>	
DES-105/108	5/8-Port 10/100 Mbps Unmanaged Switch	

Updated 2013/11/06