

TECHNISCHE DATEN:

Aufbau

Staubschuttscheibe Polyethylen PE-LD (low density)

Eigenschaften

- zur Verwendung in Kabelverschraubungen als Staubschutz während der Lagerung oder des Transports

Temperaturbereich -30 °C / +90 °C

TECHNICAL DATA:

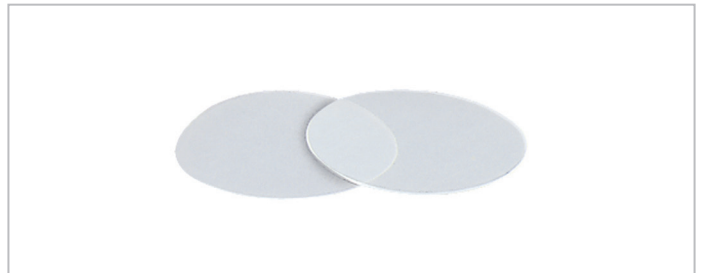
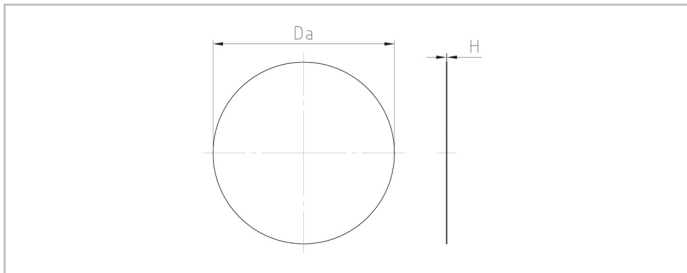
Configuration

Dust cap Polyethylene PE-LD (low density)

Properties


- applicable as dust protection for cable glands during transport or storage

Temperature range -30 °C / +90 °C



Merkmale

Characteristics

Größe / Size xx	H mm	Da mm		Art.-Nr. / Part No.
M12	0,25	10	100	M12 S-B
M16	0,25	15,5	100	M16 S-B
M20	0,25	18,5	100	313 S-B
M25	0,25	23	50	M25 S-B
M32	0,5	29	25	M32 S-B
M40	0,5	35	25	329 S
M50	0,5	45	10	336 S
M63	0,5	57	5	348 S