

Han E 06 Pos. F Insert Screw

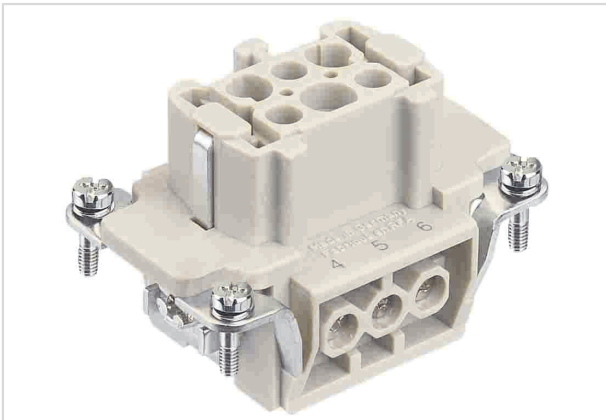


Image is for illustration purposes only. Please refer to product description.

Part number	09 33 006 2701
Specification	Han E 06 Pos. F Insert Screw
HARTING eCatalogue	https://b2b.harting.com/09330062701

Identification

Category	Inserts
Series	Han E [®]

Version

Termination method	Screw termination
Gender	Female
Size	6 B
With wire protection	Yes
Number of contacts	6
PE contact	Yes

Technical characteristics

Conductor cross-section	0.75 ... 2.5 mm ²
Conductor cross-section	AWG 18 ... AWG 14
Rated current	16 A
Rated voltage	500 V
Rated impulse voltage	6 kV
Pollution degree	3
Rated voltage acc. to UL	600 V
Rated voltage acc. to CSA	600 V
Insulation resistance	>10 ¹⁰ Ω
Contact resistance	≤1 mΩ
Stripping length	7.5 mm



Pushing Performance
Since 1945

Technical characteristics

Tightening torque	0.5 Nm
Limiting temperature	-40 ... +125 °C
Mating cycles	≥500

Material properties

Material (insert)	Polycarbonate (PC)
Colour (insert)	RAL 7032 (pebble grey)
Material (contacts)	Copper alloy
Surface (contacts)	Silver plated
Material flammability class acc. to UL 94	V-0
RoHS	compliant with exemption
RoHS exemptions	6(c): Copper alloy containing up to 4 % lead by weight
ELV status	compliant with exemption
China RoHS	50
REACH Annex XVII substances	Not contained
REACH ANNEX XIV substances	Not contained
REACH SVHC substances	Yes
REACH SVHC substances	Lead
ECHA SCIP number	5dbb3851-b94e-4e88-97a1-571845975242
California Proposition 65 substances	Yes
California Proposition 65 substances	Lead Nickel
Fire protection on railway vehicles	EN 45545-2 (2020-08)
Requirement set with Hazard Levels	R22 (HL 1-3) R23 (HL 1-3)

Specifications and approvals

Specifications	IEC 60664-1 IEC 61984
Approvals	DNV GL
UL / CSA	UL 1977 ECBT2.E235076 UL 2237 PVVA2.E318390 CSA-C22.2 No. 182.3 PVVA8.E318390

Commercial data

Packaging size	1
----------------	---



Pushing Performance
Since 1945

Commercial data

Net weight	49 g
Country of origin	Germany
European customs tariff number	85366990
GTIN	5713140050815
eCl@ss	27440205 Contact insert for industrial connectors