

## Han 10EMC/B-HSE-M25/HTE-M32 (HT)

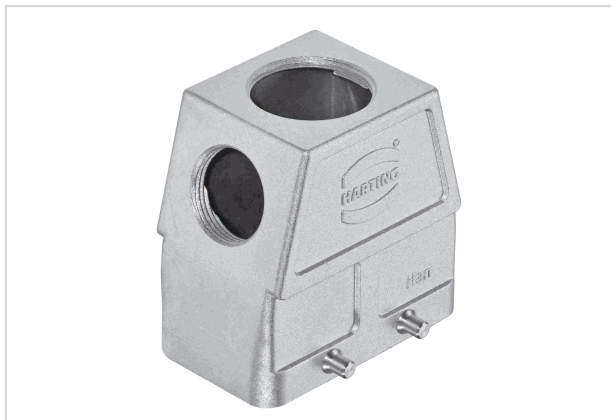


Image is for illustration purposes only. Please refer to product description.

Part number	19 62 810 0596
Specification	Han 10EMC/B-HSE-M25/HTE-M32 (HT)
HARTING eCatalogue	<a href="https://b2b.harting.com/19628100596">https://b2b.harting.com/19628100596</a>

### Identification

Category	Hoods/Housings
Series of hoods/housings	Han <sup>®</sup> EMC/B Han <sup>®</sup> High Temp
Type of hood/housing	Hood
Type	High construction

### Version

Size	10 B
Version	Top/side entry
Cable entry	1x M25 1x M32
Locking type	Double locking lever

### Technical characteristics

Limiting temperature	-40 ... +125 °C -40 ... +200 °C With Han <sup>®</sup> High Temp components
Degree of protection acc. to IEC 60529	IP65 IP66
Type rating acc. to UL 50 / UL 50E	4 12

### Material properties

Material (hood/housing)	Aluminium die-cast
Surface (hood/housing)	Uncoated
Colour (hood/housing)	Unpainted



Pushing Performance  
Since 1945

## Material properties

RoHS	compliant
ELV status	compliant
China RoHS	e
REACH Annex XVII substances	Not contained
REACH ANNEX XIV substances	Not contained
REACH SVHC substances	Not contained
California Proposition 65 substances	Yes

## Specifications and approvals

Approvals	DNV GL
UL / CSA	UL 1977 ECBT2.E235076 CSA-C22.2 No. 182.3 ECBT8.E235076
CE	Yes

## Commercial data

Packaging size	1
Net weight	151.2 g
Country of origin	Germany
European customs tariff number	85389099
GTIN	5713140132788
eCl@ss	27440202 Shell for industrial connectors