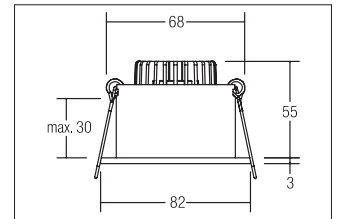
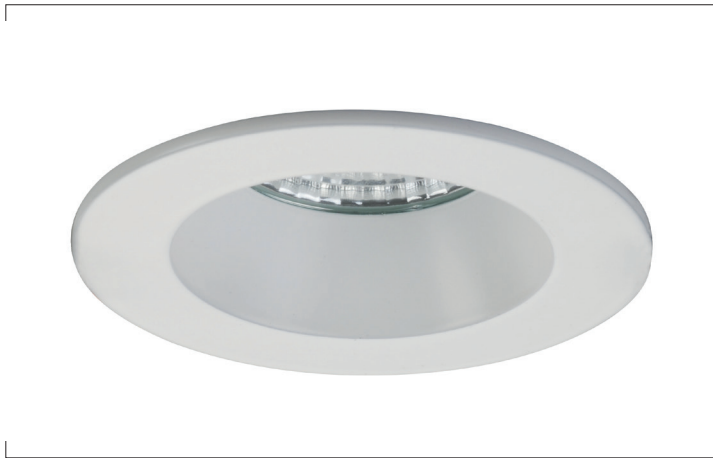


LED recessed downlight, IP54

Artikel-Nr. 12266073



LED recessed downlight, IP54, white, round. In a compact design, for installation in tool-less rapid assembly systems Lamp holder: Plug&Play, Mounting method: Recessed mounting, Place of installation: Ceiling-mounted, Material: Aluminium / Glass, Degree of protection: according to DIN EN 60529 IP54*, Protection class: (EN 61140) III, Current: 350 mA, Power: 6W, Amount of light sources / fittings: 1.0 Qty, Luminous flux: 540lm, Colour temperature: 2.700 K, Light colour : White, Beam angle: 38°, Adjustability: Not adjustable, With control gear: No, Control: Dimming depending on driver.

Artikel-Nr. 12266073
Stand: 25.10.2021 22:01

Colour temperature	2700 K
Colour	White
Beam angle	38 °
Amount of light sources / fittings	1 Qty
Material	Aluminium / Glass
Lamp holder	Plug&Play
Power	6 W
Lamp	LED
Colour rendering	CRI > 80
Control	Dimming depending on driver

Outer diameter	82 mm
Built-in diameter	68 mm
Installation depth	58 mm
Current	350 mA
Degree of protection	IP54*
Protection class	III
Circlip	Without circlip
Adjustability	Not adjustable
Circuit type	Series conduction