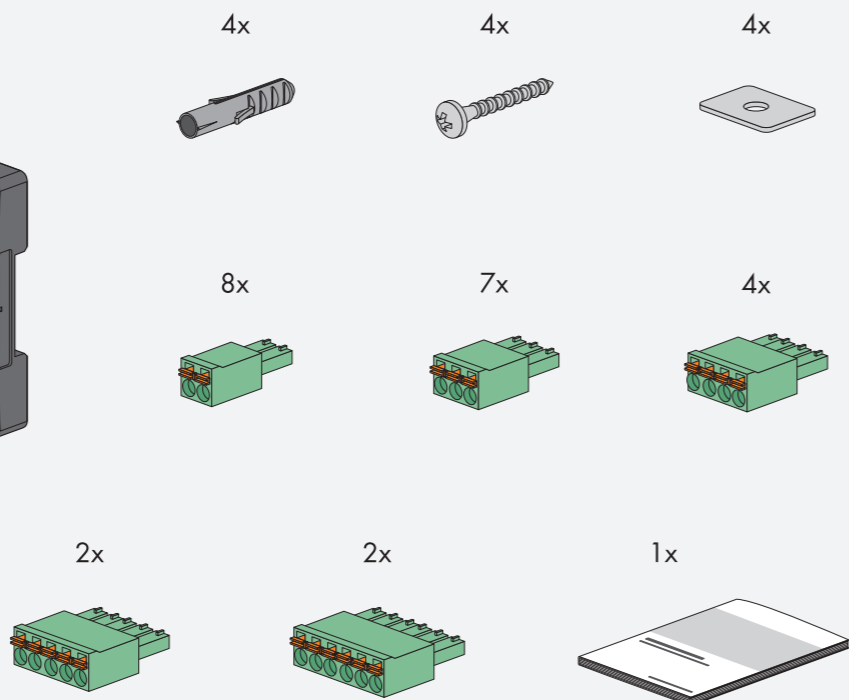
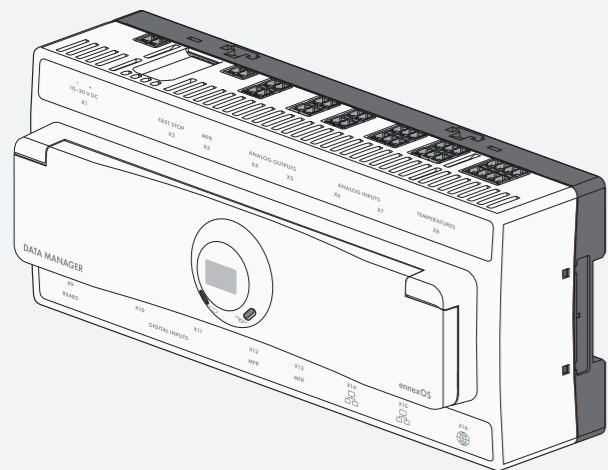




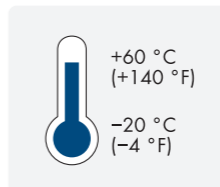
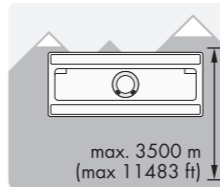
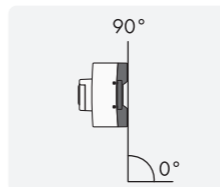
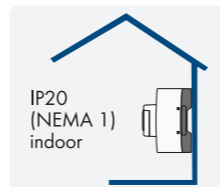
SMA DATA MANAGER M

EDMM-20

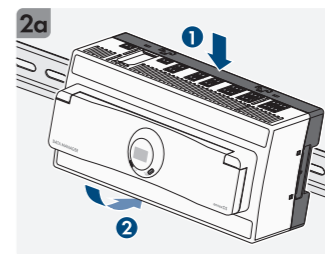
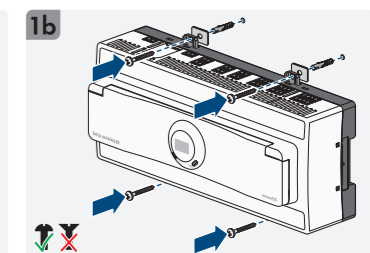
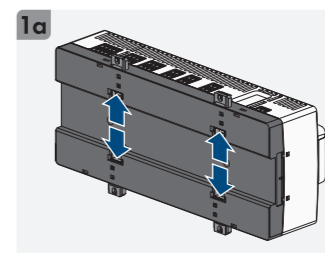
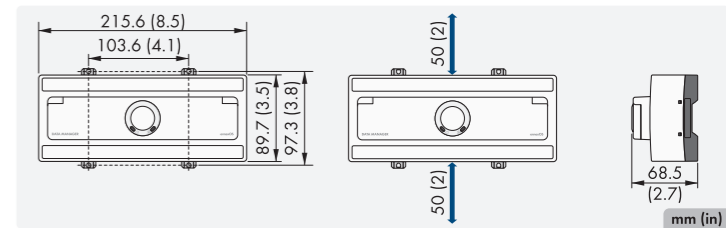
1



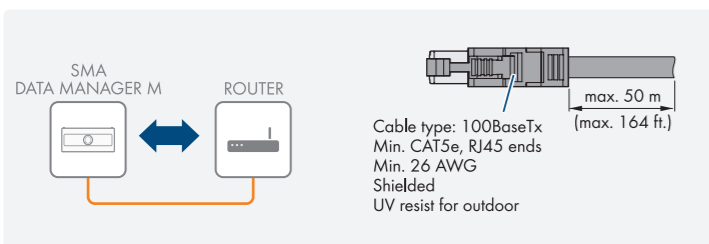
2



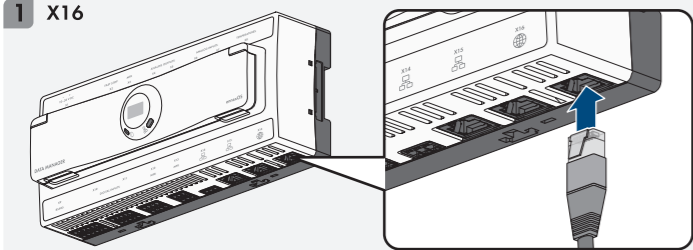
3



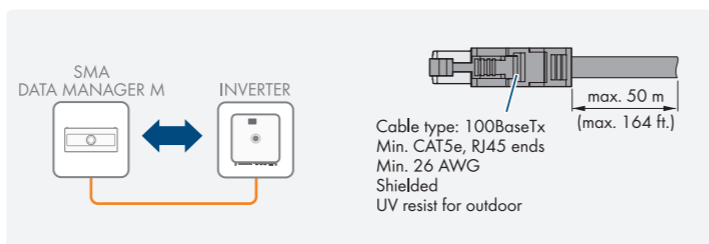
4



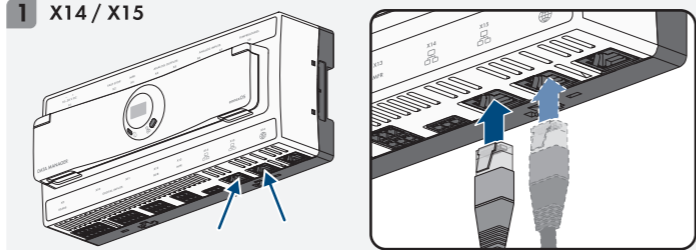
1 X16



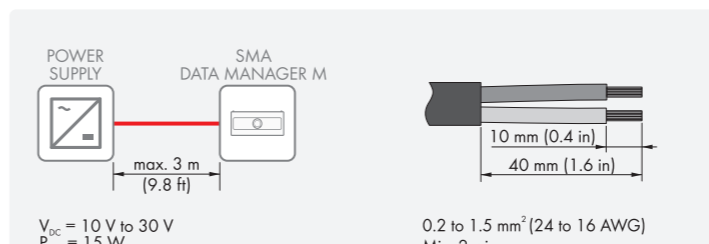
5



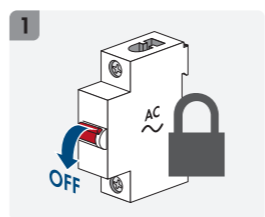
1 X14 / X15



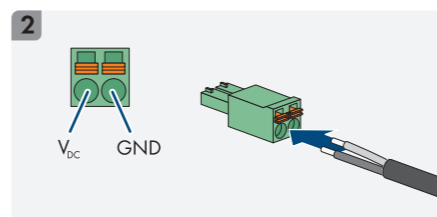
6



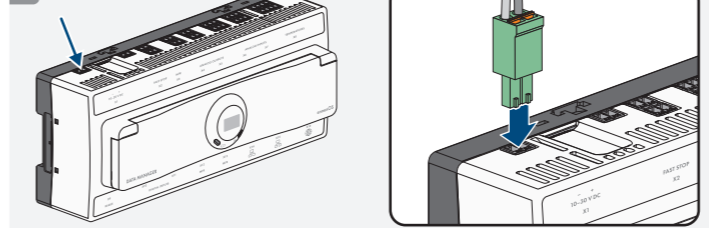
1



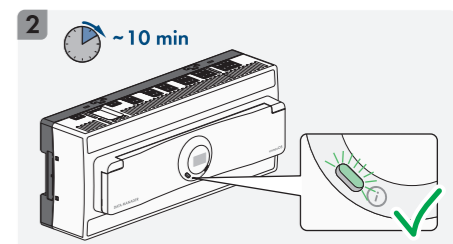
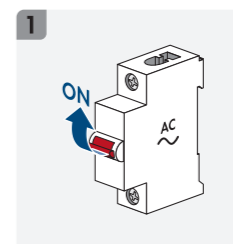
2

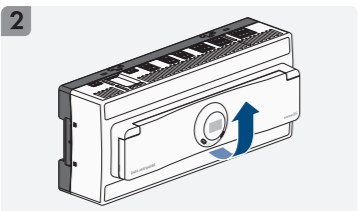
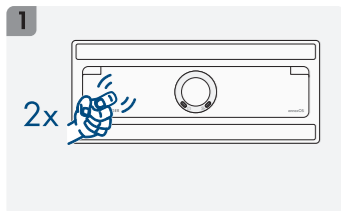
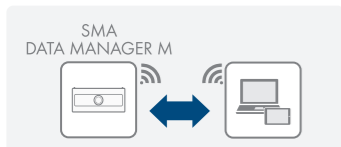


3



7





3

WLAN

SMAxxxxxxxxxx

Network 1

Network 2

SMA[Serial number]

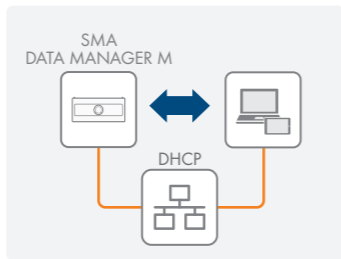
WPA2-PSK

XXX...

PIC: 005103020354312
 RID: HEFLGE
 MAC X14/15: 00158B16107C
 MAC X16: 00158B16107B
 Device Key: 00000000000000000000000000000000
 WPA2-PSK: R297DEMPCNQU75
 SN: B0920744P9

4

<https://192.168.12.3>



1

IP → <https://XXX.XXX.XX.X>

OR

Apple → SMA[Serialnumber].local

Windows → [https://SMA\[Serialnumber\]](https://SMA[Serialnumber])

1

<https://ennexOS.SunnyPortal.com/login>

ennexOS SUNNY PORTAL

Login

User

Password

I need a user account

Login

Forgotten password

2

<https://ennexOS.SunnyPortal.com>

ennexOS SUNNY PORTAL

Welcome!

Die Daten Ihres SMA-Managers in Betrieb genommen und sind erfolgreich eingeweiht. Starten Sie nun den Inbetriebnahmeprozess an den Anlagen und so konfigurieren. Die Inbetriebnahme wird über die web-Management-Software (SMA-Manager) durchgeführt. Bitte beachten Sie die Inbetriebnahmeprotokolle für Ihre Anlage.

Start



<https://go.sma.de/service>