

DEHNguard DG M PV2 SCI 1000 (FM)

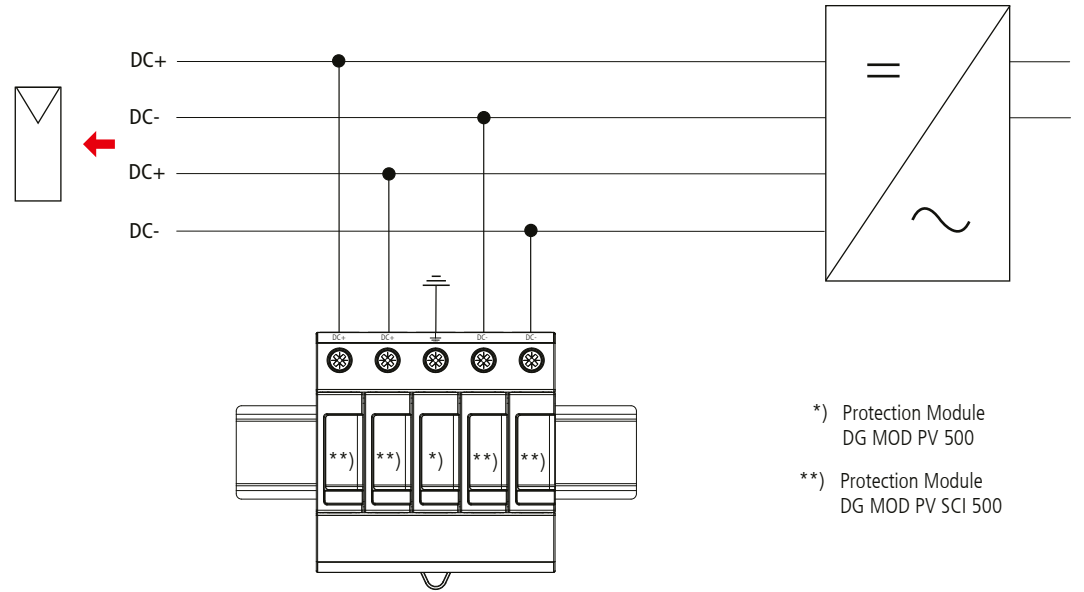
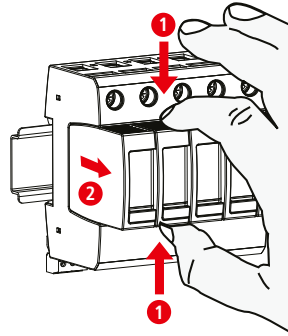
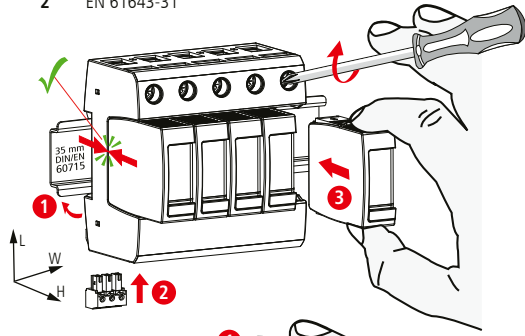
- DE Einbauanleitung
- GB Installation instructions
- IT Istruzioni di montaggio
- FR Instructions de montage
- NL Montagehandleiding
- ES Instrucciones de montaje
- PT Instruções de montagem
- DK Monteringsvejledning
- SE Monteringsanvisning
- FI Asennusohje
- GR Οδηγίες συναρμολόγησης
- PL Instrukcja montażu
- CZ Montážní návod
- TR Kurulum Talimatları
- RU Инструкция по монтажу
- CN 安装说明
- HU Szerelési útmutató
- JP 設置説明書



2 EN 50539-11... PZ 2 4 Nm

11 IEC 61643-31

2 EN 61643-31

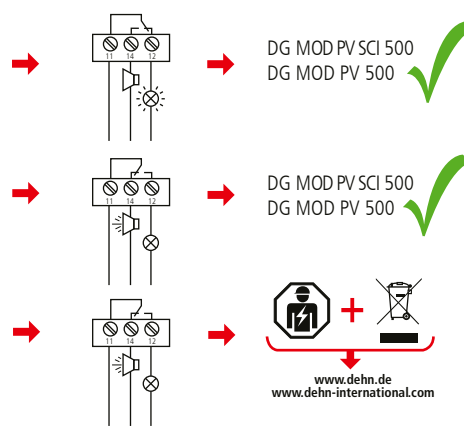
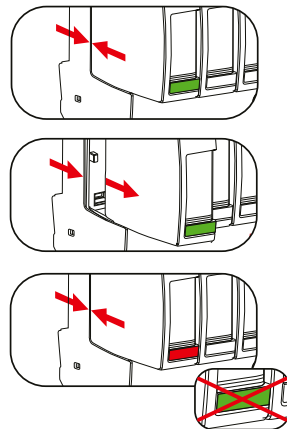


*) Protection Module
DG MOD PV 500

**) Protection Module
DG MOD PV SCI 500

DG M PV2 SCI 1000 (FM)	
DG MOD PV SCI 500 / DG MOD PV 500	
U_{CPV}	≤ 1000 V DC
I_{total}	40 kA (8/20)
I_{max}	25 kA (8/20)
I_{scpv}	10 kA
I_{cpv}	< 10 μ A
$I_{PE, AC}$	≤ 1 mA
$I_{PE, DC}$	≤ 50 μ A
θ	$-40^{\circ}\text{C} \dots +80^{\circ}\text{C}$
Φ	5% ... 95%
IP 1)	20
failure behavior	open circuit
Ausfallverhalten	Abtrennung
PV system	earthed
Ausfallverhalten	geerdet
L x W x H	90 mm x 90 mm x 73 mm

min. \square DC+, DC-, \perp	1.5 mm ²	
max. \square DC+, DC-, \perp	25 mm ²	
\square	16 mm ² Cu	≤ 15.5 mm



www.dehn.de
www.dehn-international.com

DEHNguard
DG M PV2 SCI 1000 FM

 U_N / I_N 0.2 Nm	AC: 250 V / 0.5 A
	DC: 250 V / 0.1 A 125 V / 0.2 A 75 V / 0.5 A

max. 1.5 mm²

